

	<b>DATA SHEET</b>	<b>CODE:</b> <b>FT-P-PS-P-063</b>
	<b>FRP LIGHT POLE DIRECT BURIAL INSTALLATION</b>	
	<b>SYSTEM MANAGEMENT COMPREHENSIVE</b>	<b>VERSION:</b>
	<b>INGENIERÍA ENERGÍA Y TELECOMUNICACIONES</b>	<b>DATE: [Código inválido]</b>

### 1. PRODUCT NAME

FRP LIGHT POLE DIRECT BURIAL INSTALLATION

### 2. DESCRIPTION

Monolithic Fiberglass Reinforced Polyester Pole direct burial installation

### 3. CHARACTERISTICS

Conical structure pole is used as a lighting support, with characteristics of low weight, high mechanical resistance, durability and low electrical conductivity.

Skin coat with U.V. protection (RAL 7040 approximate) Gray color or other colors by agreement.

Drilling according to customer requirements.

Textured surface.

Identified with a permanent embossed tag.

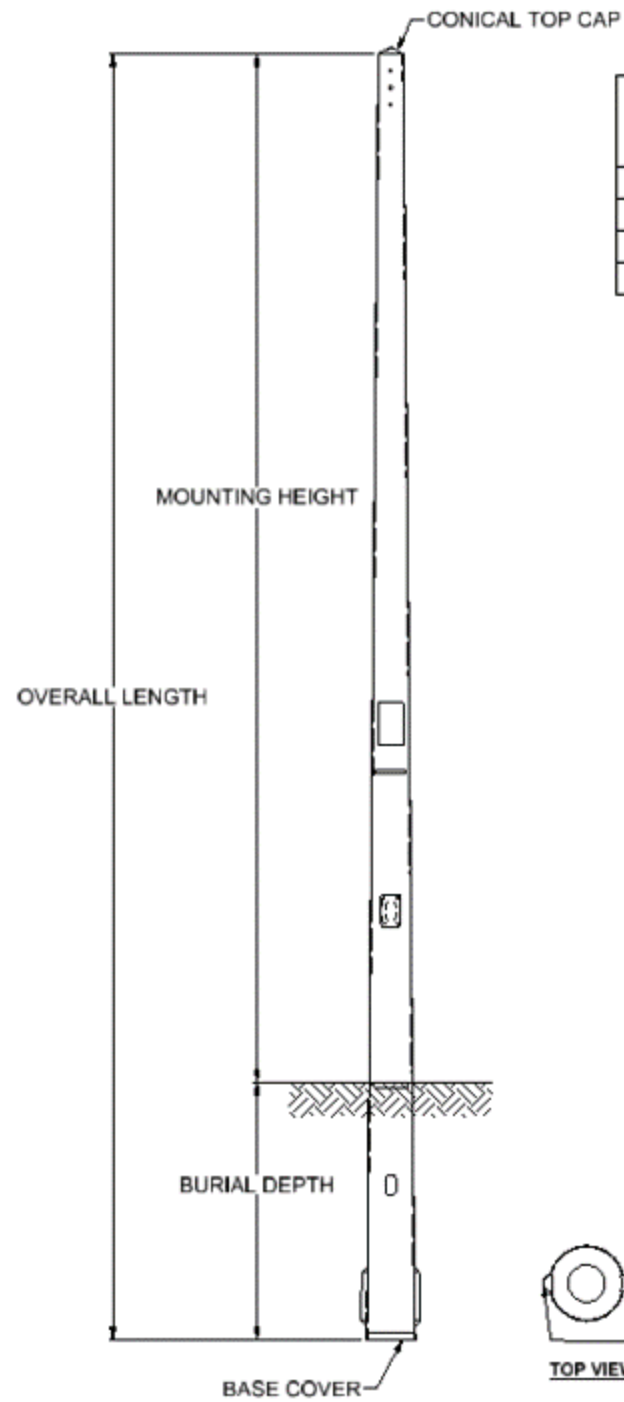
For direct burial installation.

Standard 2-1/2" x 5" handhole located 40" above grade.

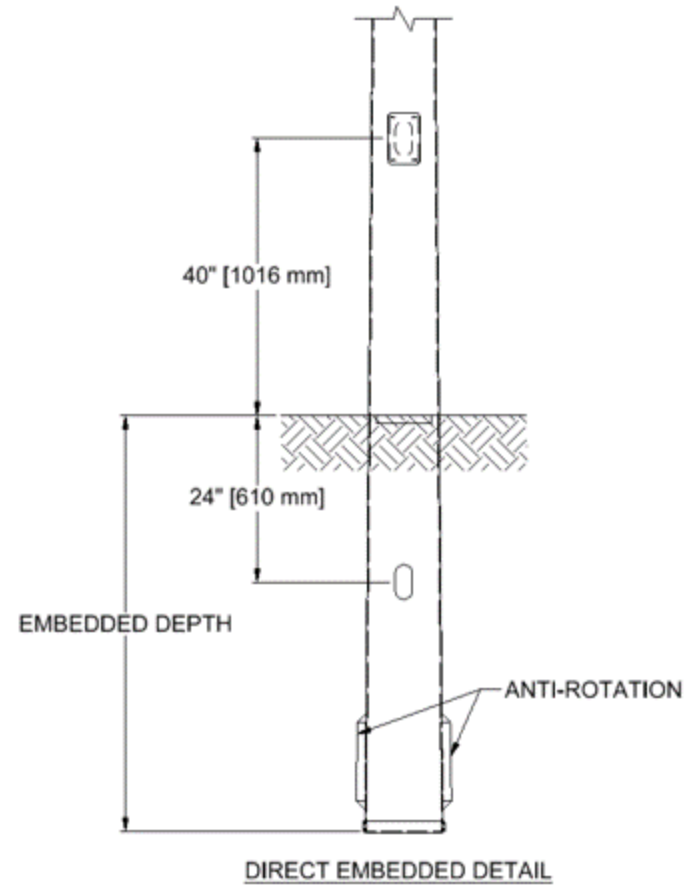
Standard 2-1/2" x 5" wire access hole 24" below grade.

Anti-rotation flare structurally integrated into the pole base during manufacture.

### 4. TECHNICAL SPECIFICATIONS



OVERALL LENGTH [ft]	MOUNTING HEIGHT [ft]	BURIAL DEPTH [ft]	TIP DIAMETER [in]	GROUNDLINE DIAMETER [in]	WEIGHT [lb]
25	20,5	4,5	6	11,4	150
30	25	5	6	12,48	167
33	27,7	5,3	6	13,128	242
35	29,5	5,5	6	13,56	286



Wind speed (MPH) values calculate as per ANSI C 136.20 for a 3-second gus factor

OVERAL LENGTH [ft]	MOUNTING HEIGHT [ft]	LUMINAIRE MAX WEIGHT [LBS]	90 MPH	100 MPH	110 MPH	120MPH	130 MPH	140 MPH	150 MPH
25	20,5	200	7	6	5,2	4,5	4	3,5	3
30	25	200	5,5	4,8	4,2	3,7	3,2	2,7	2,2
33	27,7	200	7,5	6,5	5,5	4,8	4	3,5	3
35	29,5	200	6,5	5,5	4,8	4	3,5	3	2,5

ELABORATED		REVISED		APPROVED	
<b>Cargo:</b>	Ingeniero de soporte	<b>Cargo:</b>	Profesional Tecnológico II Industria	<b>Cargo:</b>	Analista de Gestión Integral
<b>Fecha:</b>	21/Feb/2024	<b>Fecha:</b>	23/Feb/2024	<b>Fecha:</b>	23/Feb/2024